

# THE WORKS EBBW VALE

the vision  
the possibilities  
the future

Richard Crook  
Projects Director

## The site in context

THE WORKS EBBW VALE

## Recent history

- Closure announced February 2001 and took place July 2002.
- Corus commenced site clearance in October 2002 and completed activities October 2005.
- Site purchased by BGCBC November 2005.
- Work started on site November 2005
- Masterplan approved July 2007

THE WORKS EBBW VALE

## Sustainable Development

Social

Resource

Environmental

Economic

THE WORKS EBBW VALE

## Master Plan

Ysbyty Aneurin Bevan Hospital

Leisure Centre and sports pitches

Learning Zone

Future Welsh Homes

Wetland Park

Primary School

Environmental Resource Centre

General Offices, new Station

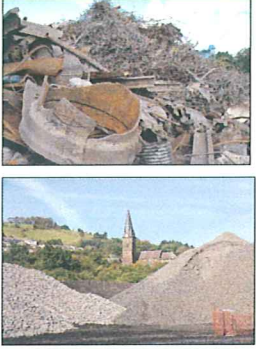

THE WORKS EBBW VALE

## Social - Designing the external art work for ERC

THE WORKS EBBW VALE

### Resources - Reclamation

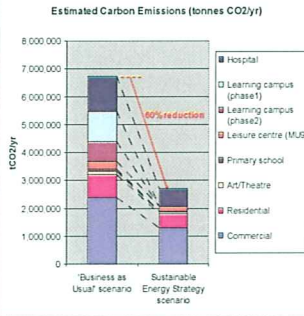
- No net import of fill
- Recycling steel and concrete
- Sustainable urban drainage systems (SUDS)
- Local labour resource
- Soil restoration and creation
- Landscape and biodiversity enhancement

**THE WORKS**  
BIRMINGHAM

### Environmental - Sustainable Energy Strategy

Estimated Carbon Emissions (tonnes CO<sub>2</sub>/yr)



- Minimise the demand for energy
- Supply energy efficiently
- Use renewable energy

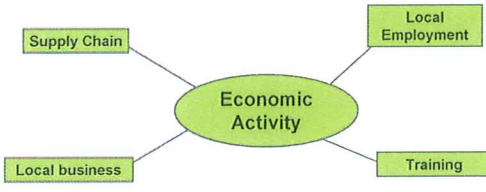
Aim to reduce carbon emissions by 60% against current (2006) 'Business as usual' scenario.

Breeam Excellent/CSH 4 etc

Demonstrate how projects can move to becoming carbon neutral over time.

**THE WORKS**  
BIRMINGHAM

### Economic - Securing Local Benefits




**THE WORKS**  
BIRMINGHAM

### Facts and Figures

- Equivalent of 66 million cans of steel has been recycled.
- 125,000 tonnes of soil have been created using 15,000 tonnes of compost to cover 11 hectares of land.
- 60% reduction in CO<sub>2</sub> emissions from "business as usual" scenario. Electricity generated on site – Combined Heat and Power (CHP)
- The deepest basement is 28m high and will accommodate a 10-storey building.

**THE WORKS**  
BIRMINGHAM

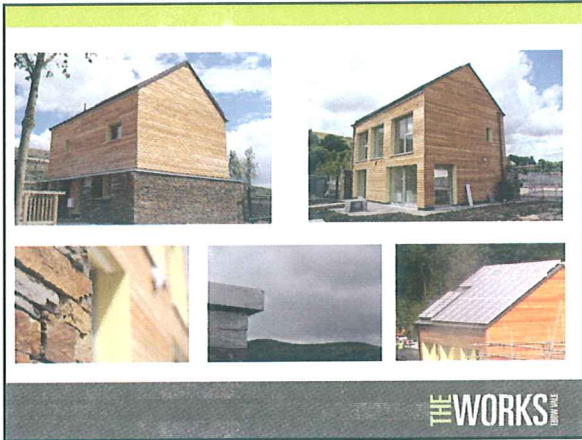


**THE WORKS**  
BIRMINGHAM

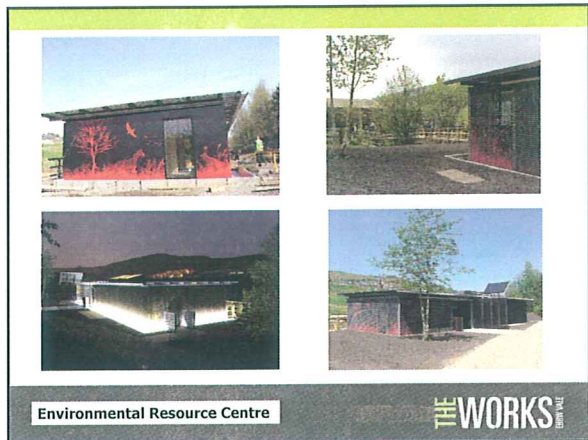
### Welsh Future Homes



**THE WORKS**  
BIRMINGHAM

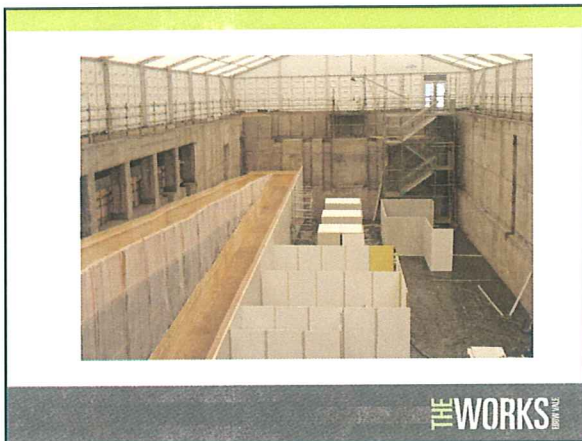


THE WORKS  
BERRY HILL

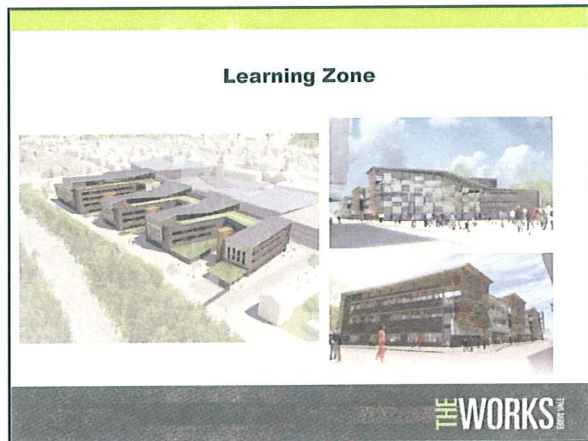


Environmental Resource Centre

THE WORKS  
BERRY HILL

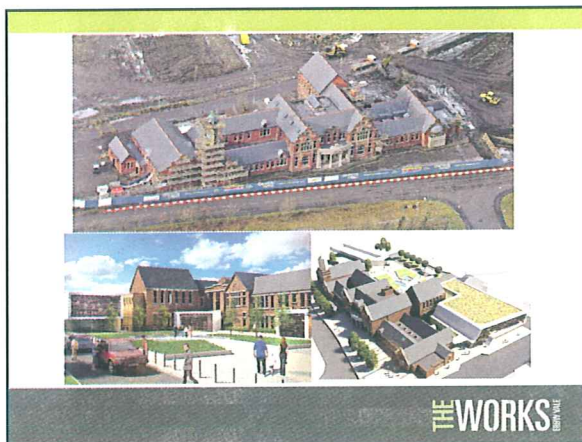


THE WORKS  
BERRY HILL

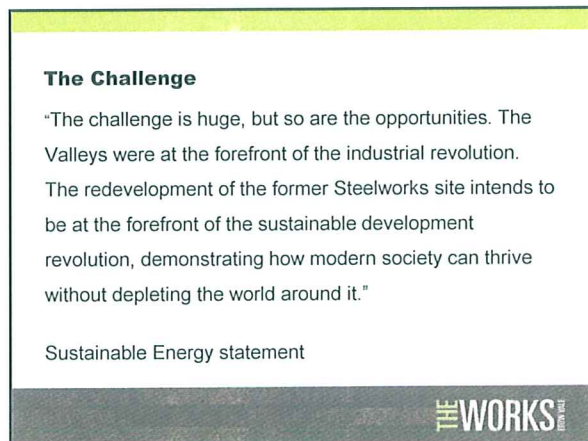


Learning Zone

THE WORKS  
BERRY HILL



THE WORKS  
BERRY HILL



**The Challenge**

"The challenge is huge, but so are the opportunities. The Valleys were at the forefront of the industrial revolution. The redevelopment of the former Steelworks site intends to be at the forefront of the sustainable development revolution, demonstrating how modern society can thrive without depleting the world around it."

Sustainable Energy statement

THE WORKS  
BERRY HILL

[www.theworksebbwvale.co.uk](http://www.theworksebbwvale.co.uk)

Richard Crook  
Project Director  
Project Office  
Steelworks Road  
Ebbw Vale  
Blaenau Gwent  
NP23 6YL

Tel: 01495 357810

Email: [richard.crook@blaenau-gwent.gov.uk](mailto:richard.crook@blaenau-gwent.gov.uk)

**THEWORKS**  
Ebbw Vale